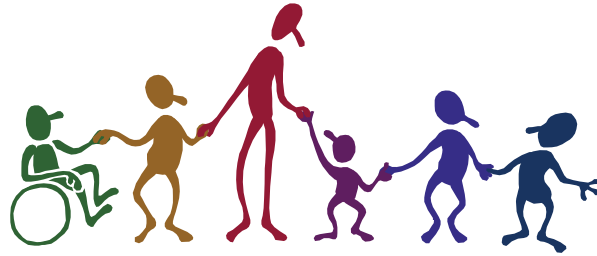


PA CASSP



Pennsylvania Child and Adolescent Service System Program

The current public children's behavioral health system in Pennsylvania is based on the principles and framework developed more than 20 years ago through the Child and Adolescent Service System Program (CASSP).

CASSP is based on a well-defined set of principles for mental health services for children and adolescents with or at risk of developing severe emotional disorders and their families. These principles are summarized in the six core statements that follow.

Child-centered: Services are planned to meet the individual needs of the child, rather than to fit the child into an existing service. Services consider the child's family and community contexts, are developmentally appropriate and child-specific, and build on the strengths of the child and family to meet the mental health, social and physical needs of the child.

Family-focused: The family is the primary support system for the child and it is important to help empower the family to advocate for themselves. The family participates as a full partner in all stages of the decision-making and treatment planning process including implementation, monitoring and evaluation. A family may include biological, adoptive and foster parents, siblings, grandparents, other relatives, and other adults who are committed to the child. The development of mental health policy at state and local levels includes family representation.

Community-based: Whenever possible, services are delivered in the child's home community, drawing on formal and informal resources to promote the child's successful participation in the community. Community resources include not only mental health professionals and provider agencies, but also social, religious, cultural organizations and other natural community support networks.

Multi-system: Services are planned in collaboration with all the child-serving systems involved in the child's life. Representatives from all these systems and the family collaborate to define the goals for the child, develop a service plan, develop the necessary resources to implement the plan, provide appropriate support to the child and family, and evaluate progress.

Culturally competent: Culture determines our worldview and provides a general design for living and patterns for interpreting reality that are reflected in our behavior. Therefore, services that are culturally competent are provided by individuals who have the skills to recognize and respect the behavior, ideas, attitudes, values, beliefs, customs, language, rituals, ceremonies and practices characteristic of a particular group of people.

Least restrictive/least intrusive: Services take place in settings that are the most appropriate and natural for the child and family and are the least restrictive and intrusive available to meet the needs of the child and family.

For more CASSP or Children's Behavioral Health Information

Contact your county Mental Health/Mental Retardation or Human Services office, or **Department of Public Welfare**, Office of Mental health and Substance Abuse Services, Bureau of Children's Behavioral Health Services, DSG Annex Complex, Beechmont Building, **P.O. Box 2675, Harrisburg, PA 17105, Phone: 717.772.7984, Fax: 717.705.8268, www.dpw.state.pa.us**